



WWW.BARRYIND.COM

RM2010CT-1000GN-99



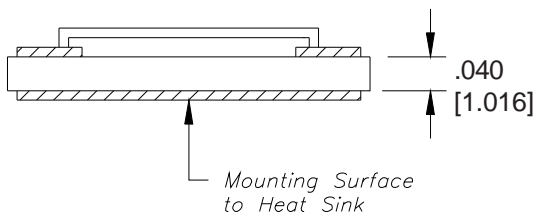
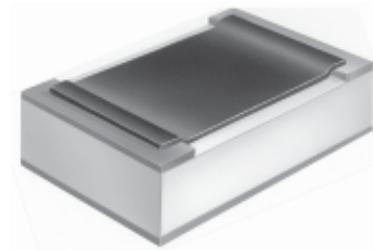
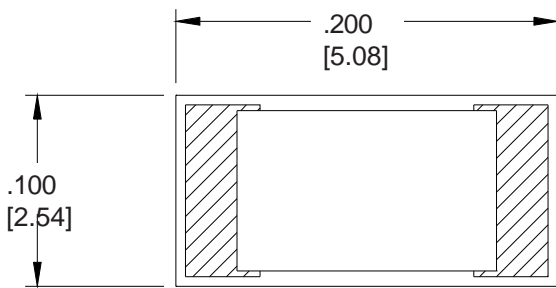
BeO 100 Ohm CHIP RESISTOR

Features:

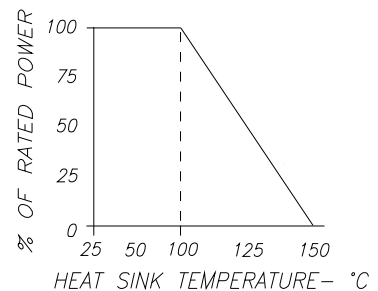
- ◆ BeO Material
- ◆ 30 Watt Input Power
- ◆ Compact Construction
- ◆ CT - Matte Tin over Nickel over Silver

General Description:

The RM2010CT-1000GN-99 is a BeO 100 ohm surface mount chip resistor with a input power rating of 30 watts while maintaining a mounting surface temperature of 100° C. Its compact size is ideal for miniature electronic components.



DERATING CURVE:



- All Dimensions in inches
- Tolerance $\pm .005$ [.127] unless otherwise stated

Parameter	Min.	Typ.	Max.	Units
Resistance Tolerance	98	100	102	Ohms
Input Power			30	Watts
Mounting Surface Temperature			100 150 (0% Power)	°C

Barry Industries reserves the right to change part number and or process without notification

Barry Industries, Inc., 60 Walton St., Attleboro, MA 02703 T: 508-226-3350 F: 508-226-3317 E-mail: ABSales@Vishay.com
Barry Industries maintains an ISO 9001 Certified Quality Management System

Orig. Date	Rev. Date	Rev.
01/10/13	01/10/13	-